

GreenPrint Interactive Map Users Guide

The Office of Governor Martin O'Malley, the Maryland Departments of Agriculture, Natural Resources, and Planning, Towson University's Center for Geographic Information Sciences and the Environmental Systems Research Institute partnered to develop this GreenPrint interactive map.

Specialized software is not required to use this map. Only a web browser is needed. The map has been tested using two different web browsers – Internet Explorer 7 and Firefox version 3 or newer. If you are using older version of these browsers or are using a different browser the map may not function as designed.

Launch the Interactive Map

Upon clicking the mouse on the Launch the Interactive Map button the map will load in several seconds.



The map of Maryland shows two green colors – light green and dark green. The dark green represents the land already protected from development. The light green represents land targeted for protection due to its high ecological value. The tan represents military installations.



Clicking on the Legend tab in the lower left hand corner of the map will display a Map Legend that illustrates what can be found on the map (depending on the data displayed).

Navigating Around the Map

Enter a street address in the Address Box at the top left hand corner of the map in the following format: 100 Main Street, 21403. Click on the Go button.

Select a county from Select a County pick list on the top right hand corner of the map.

Click the pan button and hold the left mouse on the map to move the map around in the window.



Zooming In or Out of the Map to See More or Less Detail

Use the slide bar on the left to zoom in or out. With the mouse, drag the button on the slide bar up or down, click on the slide bar above or below the button, or click on the small arrows at the slide bar ends. If the map turns to all white space when zooming in, zoom out a little to see the map, move the map so that the area of interest is in the middle of the window and resume zooming.

Use the zoom in tool at the top of the page to view area of interest. With the zoom in button clicked you can either click on an area of interest to zoom into that area, or draw a box around the area of interest and zoom to that area. The zoom out tool functions in the same manner.

Changing the Look of the Map

There are two different map views. One is a traditional map with roads, place names, city and town boundaries, etc. The other is an image. See the buttons called Map and Satellite in the upper right hand corner of the map.

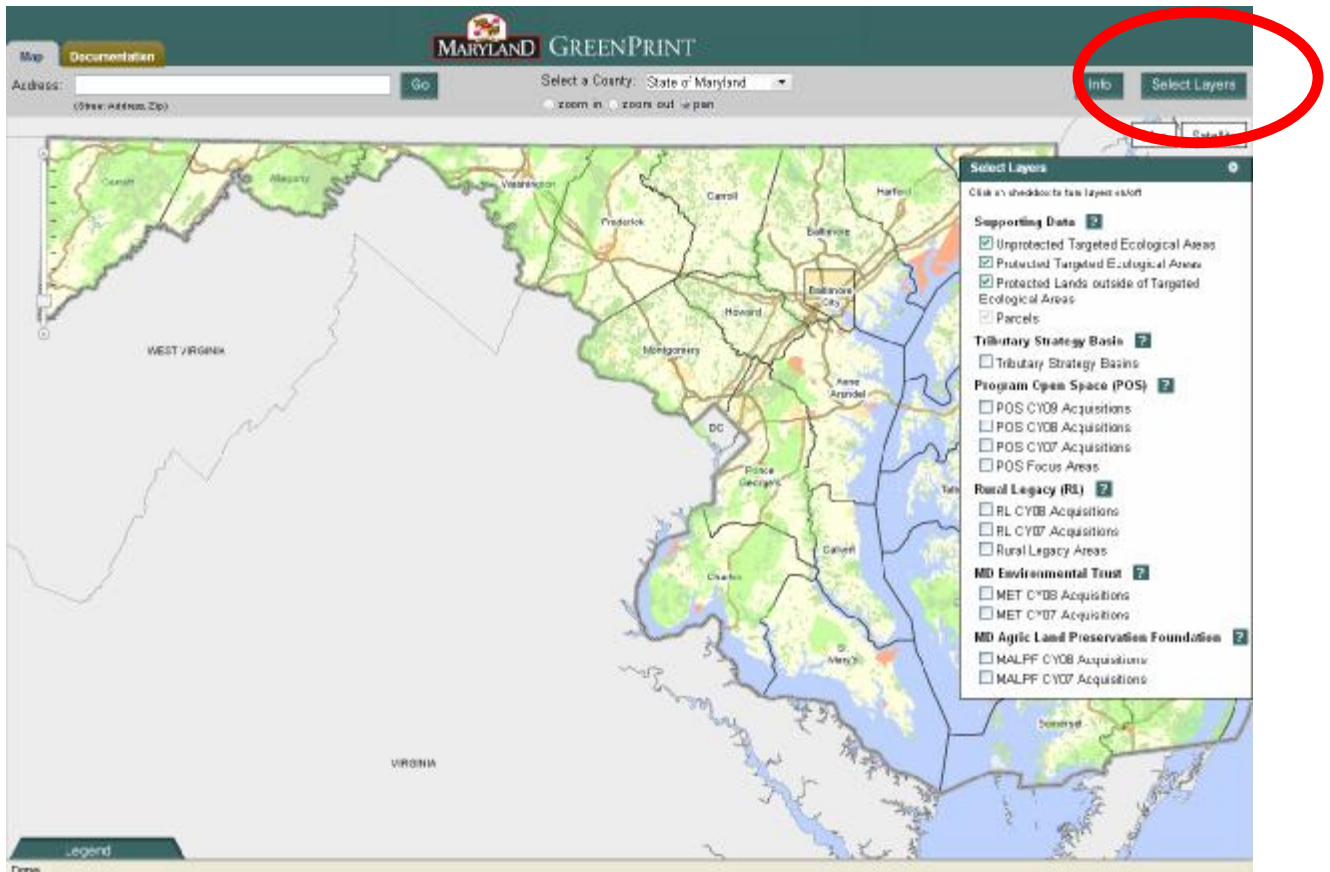
Clicking on the Satellite button will change the map to recently acquired imagery. Clicking on the Map button will return the map back to the traditional map.



Changing Data on the Map

The GreenPrint interactive map starts with the traditional map as the base and has the light green/dark green colors displayed. The user can control what data is displayed on the map. Click on the Select Layers button on the top right hand corner of the map and a list of data will be displayed.

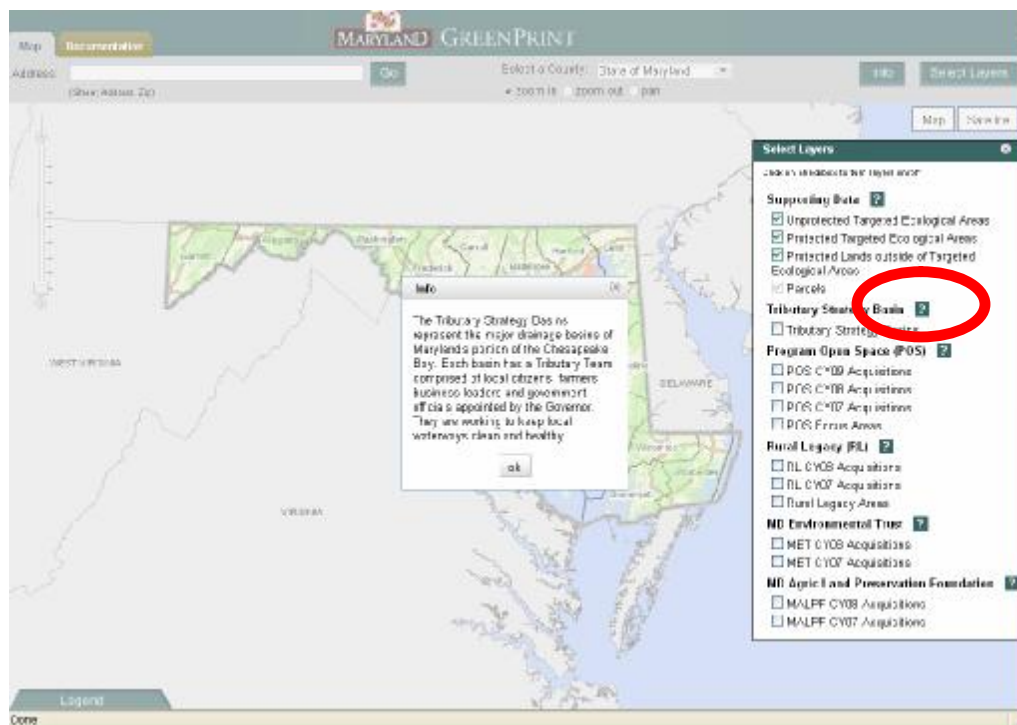
Green check marks indicate the data that is “turned on” to be visible on the map. Clicking on a check box will turn a data layer on or off. The map will redraw automatically.



A layer that is grayed out is available to the map but is not visible at the current zoom level of the map. For example, at the statewide view, the layer named Parcels is grayed out and the check box does nothing. The parcel, property or tax map data is not displayed or “turned on” at the current zoom level. Zooming into map to a high degree will display the parcels. The Parcels layer is no longer grayed out after zooming in.

Information about a Group

Clicking on the question mark icon to the right of a Group Title will pop up an Info box with a description of the group and when applicable, the currentness of the data in that group.



Group and Layer Descriptions

Supporting Data

- Targeted Ecological Areas – this layer represents the Targeted Ecological Areas (TEA) – those lands the State wants to protect due to high ecological value.
- Protected TEA – this layer represents those lands already protected from development that are within the TEA.
- Protected Lands outside TEA – this layer represents those lands already protected from development that are outside the TEA.
- Parcels – this layer represents the parcel, property or tax maps data. It displays only at a high zoom level. The data consists of two parts – a map of the property boundary, and an orange dot in the middle of the parcel. Clicking on this dot will open a window that displays information about the parcel.

Tributary Strategy Basins

- Tributary Strategy Basins - represent the major drainage basins of Maryland's portion of the Chesapeake Bay.

Program Open Space

- POS CY10 Acquisitions - this layer represents lands that were purchased by Program Open Space (POS) in calendar year 2010 (CY10).
- POS CY09 Acquisitions - this layer represents lands that were purchased by Program Open Space (POS) in calendar year 2009 (CY09).
- POS CY08 Acquisitions - this layer represents lands that were purchased by Program Open Space (POS) in calendar year 2008 (CY08).
- POS CY07 Acquisitions - this layer represents lands that were purchased by Program Open Space (POS) in calendar year 2007 (CY07).
- POS Focus Areas - this layer represents the areas that the Program Open Space has identified, focusing program efforts to protect land. Properties outside these areas may be protected, but the Focus Areas serve to guide program efforts.

Rural Legacy

- RL CY10 Acquisitions - this layer represents easements that were purchased by the Rural Legacy program (RL) in calendar year 2010 (CY10).
- RL CY09 Acquisitions - this layer represents easements that were purchased by the Rural Legacy program (RL) in calendar year 2009 (CY09).
- RL CY08 Acquisitions - this layer represents easements that were purchased by the Rural Legacy program (RL) in calendar year 2008 (CY08).
- RL CY07 Acquisitions - this layer represents easements that were purchased by the Rural Legacy program (RL) in calendar year 2007 (RL07).
- Rural Legacy Areas - this layer represents the areas identified by the Rural Legacy program as suitable for protection.

Maryland Environmental Trust

- MET CY10 Acquisitions – this layer represents easements that were acquired by Maryland Environmental Trust (MET) in calendar year 2010 (CY10).
- MET CY09 Acquisitions – this layer represents easements that were acquired by Maryland Environmental Trust (MET) in calendar year 2009 (CY09).
- MET CY08 Acquisitions – this layer represents easements that were acquired by Maryland Environmental Trust (MET) in calendar year 2008 (CY08).
- MET CY07 Acquisitions – this layer represents easements that were acquired by Maryland Environmental Trust (MET) in calendar year 2007 (CY07).

Maryland Agricultural Land Preservation Foundation

- MALPF CY09 Acquisitions – this layer represents easements that were purchased by Maryland Agricultural Land Preservation Foundation (MALPF) in calendar year 2009 (CY09).
- MALPF CY08 Acquisitions – this layer represents easements that were purchased by Maryland Agricultural Land Preservation Foundation (MALPF) in calendar year 2008 (CY08).
- MALPF CY07 Acquisitions – this layer represents easements that were purchased by Maryland Agricultural Land Preservation Foundation (MALPF) in calendar year 2007 (CY07).

When the various Acquisitions data layers are displayed, their symbols displayed on the map will be a “Star” symbol or the shape of the property purchased. The Star displays at low zoom levels and the property shape is displayed at high zoom levels. The system handles this automatically.

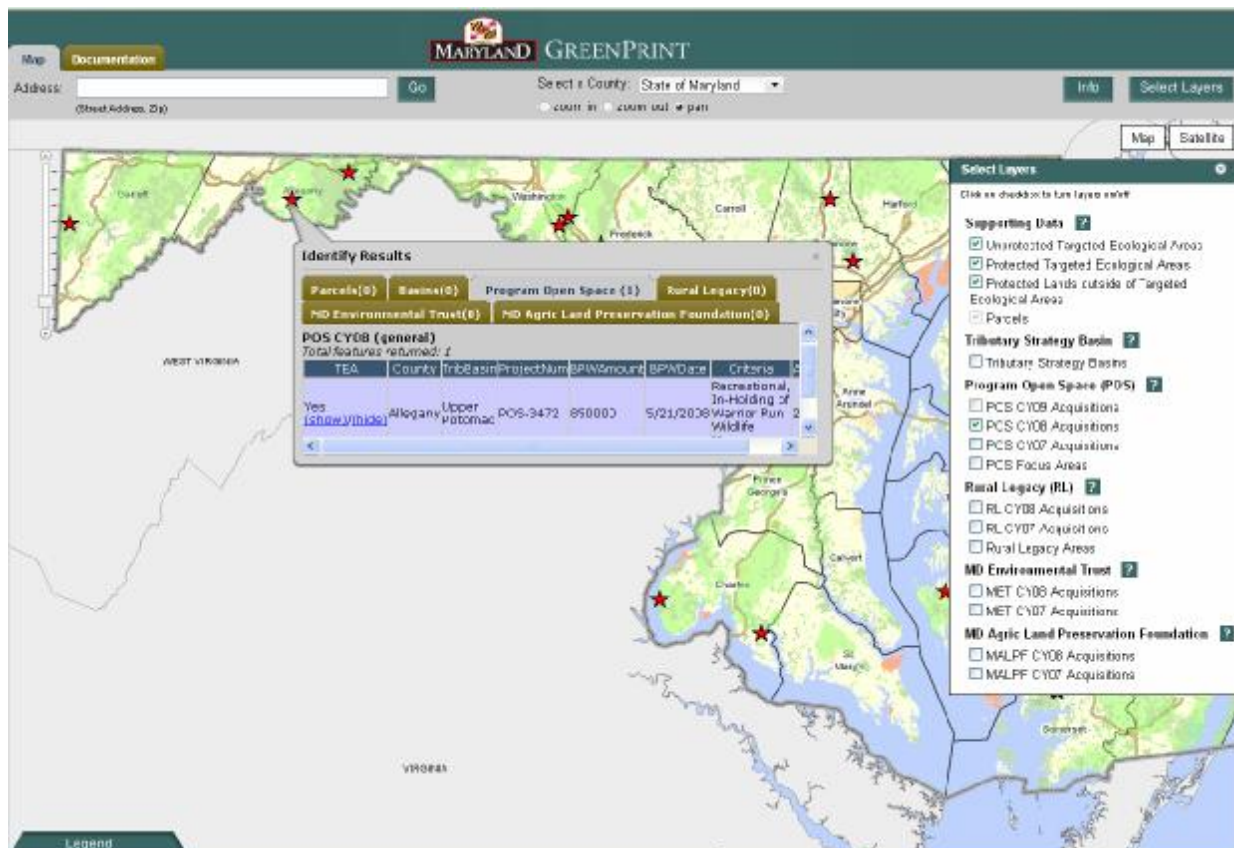
Wastewater Treatment Plants

- This layer represents the major Wastewater Treatment Plants and their ENR (Enhanced Nutrient Removal) status.

Examining Details of Data

The Info button (next to the Select Layers button) directs the user to click the left mouse on a feature. A window will open up and indicate if there is information in the map to examine. For example, turn on a data layer for the POS CY08. Click on the Star or property depending on the zoom level. Then click on the appropriate tab on the window – Program Open Space in this case.

The data table for Program Open Space (POS) purchases is described below.



POS CYxx Acquisitions – Stateside Program Open Space acquisitions in calendar year xx, where xx represents a two-digit year

Established in 1969, Program Open Space (POS) symbolizes Maryland's long-term commitment to conserving natural resources while providing exceptional outdoor recreation opportunities. POS Stateside acquires parklands, forests, wildlife habitat, and natural, scenic and cultural resources for public use.

The star symbol, which displays at regional and statewide views, shows the location of a project purchased in a calendar year. A project can consist of one or more parcels. Outlines of actual parcels purchased within a calendar year display at more detailed, neighborhood views. In the case of a project with multiple parcels, the Identify results will indicate the total acreage and BPW amount for the project. Hence, you will see the same acreage, BPW amount and TEA result for each part of the project.

Identify Results for Program Open Space acquisitions

Acres – Approximate number of fee-simple or easement acres purchased

BPWAmount – Dollar amount approved by the Board of Public Works for a POS project

BPWDate – Date the POS project was approved by the Board of Public Works

County – The name of the county in which a POS parcel is located.

Criteria – POS's rationale for purchasing the project

ProjectNum – Reference number assigned to POS project

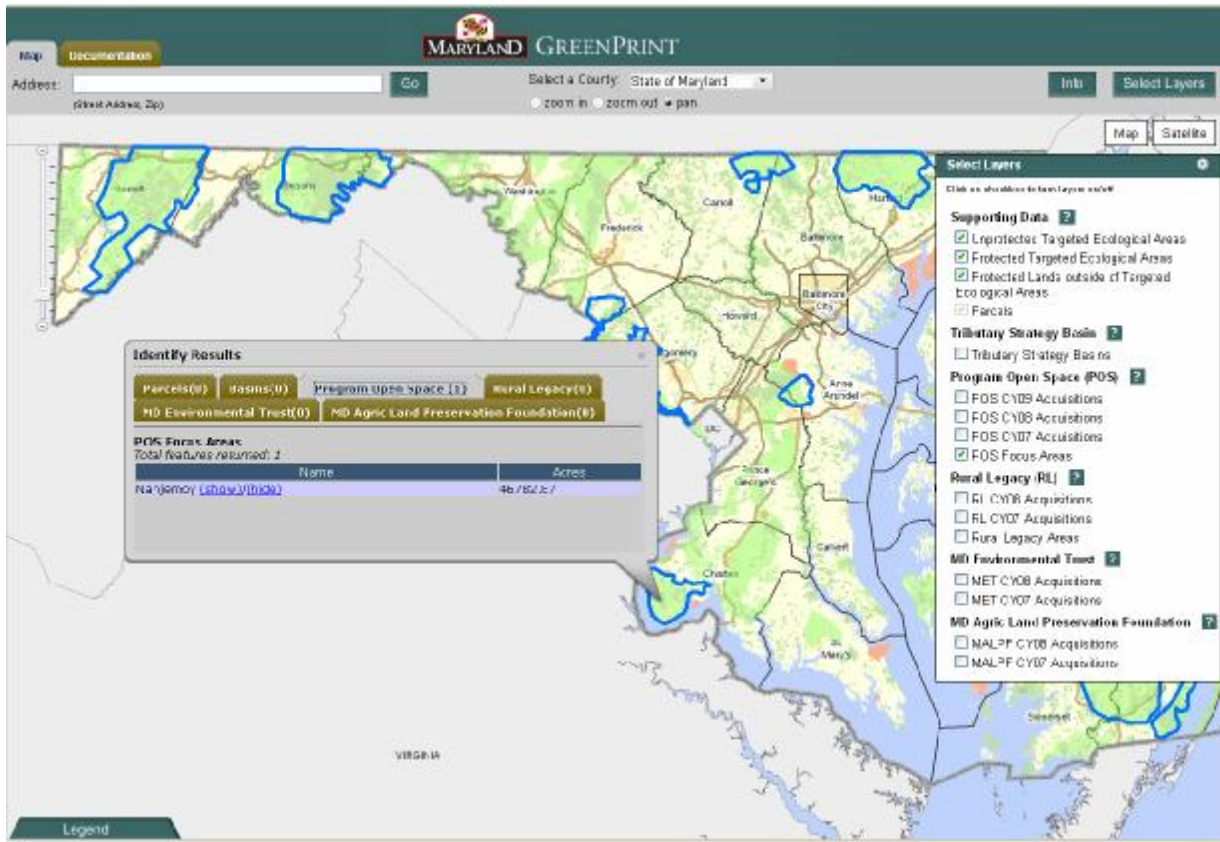
TEA – Specifies whether POS project falls within the Targeted Ecological Area

Yes = In TEA

No = Out of TEA

TribBasin – Indicates name of Tributary Strategy Basin the parcel is in

The data table for Focus Areas is described below.



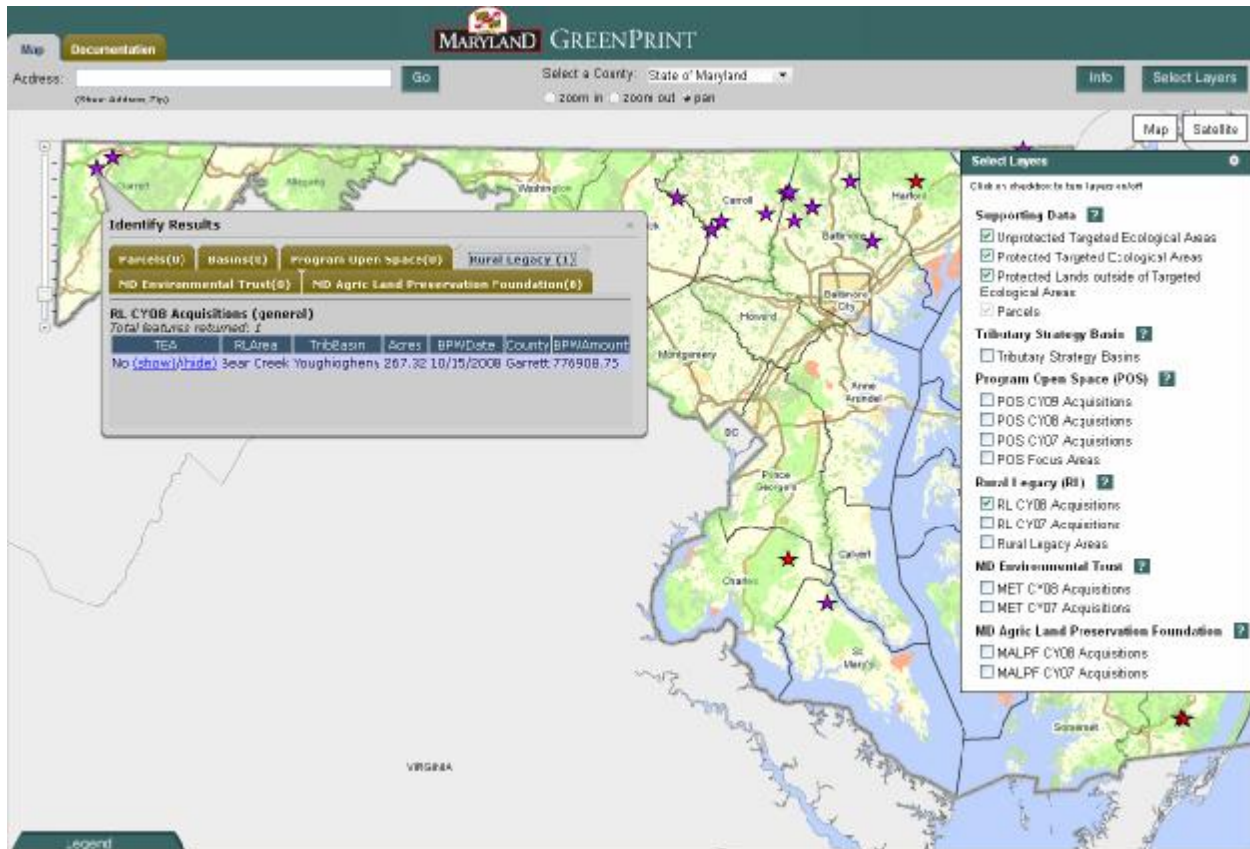
The Department of Natural Resources (DNR) has implemented a “POS Targeting” land conservation system based first on ecological priorities. The “POS Targeting System” begins with an ecological screen that uses an ecological baseline to select Targeted Ecological Areas (TEA). From the collection of selected areas, a programmatic screen uses implementation criteria to identify annual Focus Areas. Finally, a parcel analysis is used to assess, score, and prioritize parcels within the focus areas. A smaller portion of State POS funds will still be used to acquire high priority recreational, cultural, and historic sites, provide key Chesapeake Bay access points, connect trails, and acquire state park in-holdings.

Identify Results for Focus Areas

Acres – Focus Area GIS acres generated in Arc Gis

Name – Name of Focus Area

The data table for Rural Legacy (RL) acquisitions is described below.



RL CYxx Acquisitions – Rural Legacy acquisitions in calendar year xx, where xx represents two-digit year

The Rural Legacy Program provides the focus and funding necessary to protect large, contiguous tracts of land and other strategic areas from sprawl development and to enhance natural resource, agricultural, forestry and environmental protection through cooperative efforts among state and local governments and land trusts. Protection is provided through the acquisition of easements and fee estates from willing landowners and the supporting activities of Rural Legacy Sponsors and local governments.

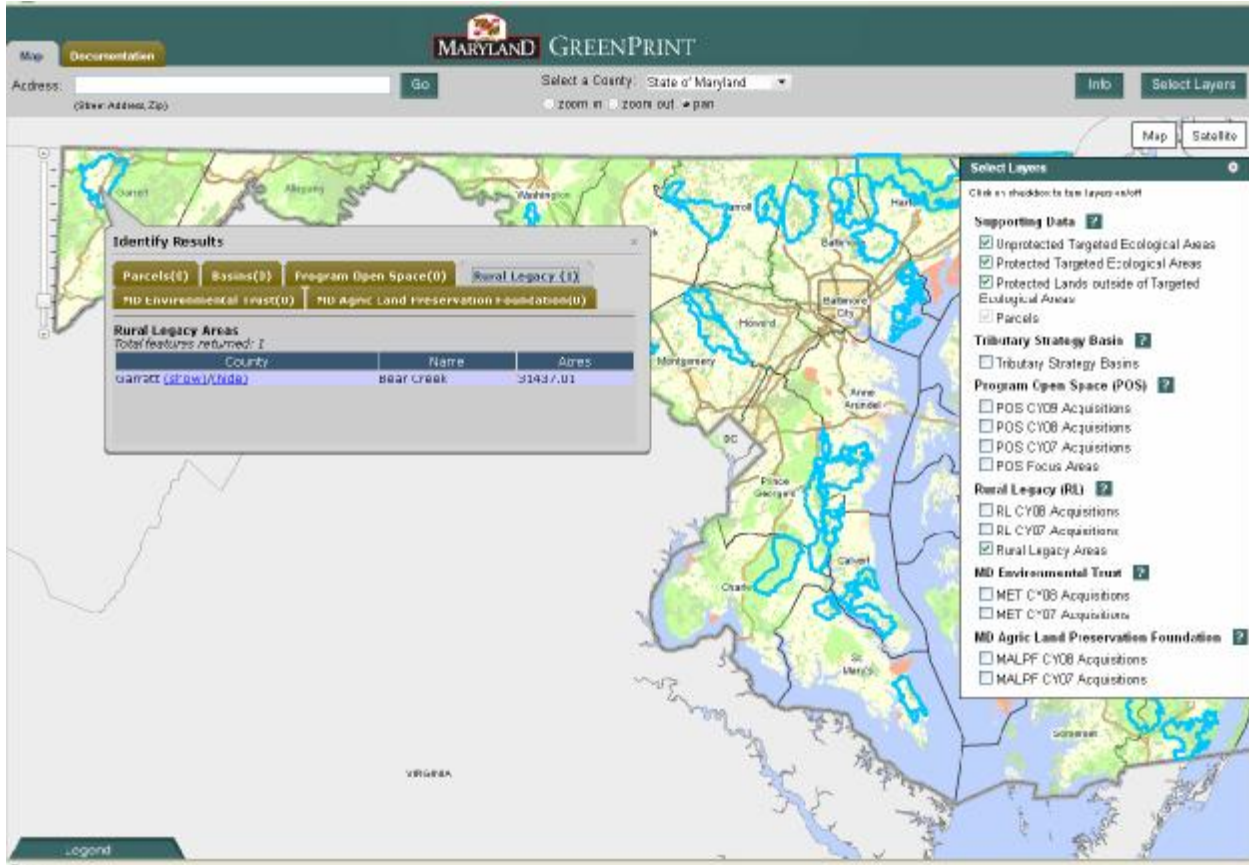
The star symbol, which displays at regional and statewide views, shows the location of a project purchased in a calendar year. A project can consist of one or more parcels. Outlines of actual parcels purchased within a calendar year display at more detailed, neighborhood views. In the case of a project with multiple parcels, the Identify results will indicate the total acreage and BPW amount for the project. Hence, you will see the same acreage, BPW amount and TEA result for each part of the project.

Identify Results for Rural Legacy acquisitions

- Acres – Approximate number of easement or fee-simple acres purchased
- BPWAmount – Dollar amount approved by the Board of Public Works
- BPWDate – Date the Rural Legacy project was approved by the Board of Public Works
- County –The name of the county in which a Rural Legacy project is located.

TEA – Specifies whether Rural Legacy project falls within the Targeted Ecological Area
 Yes = In TEA
 No = Out of TEA
 RLArea – Name of Rural Legacy Area
 TribBasin – Indicates name of Tributary Strategy Basin that the parcel is in

The data table for Rural Legacy Areas is described below.



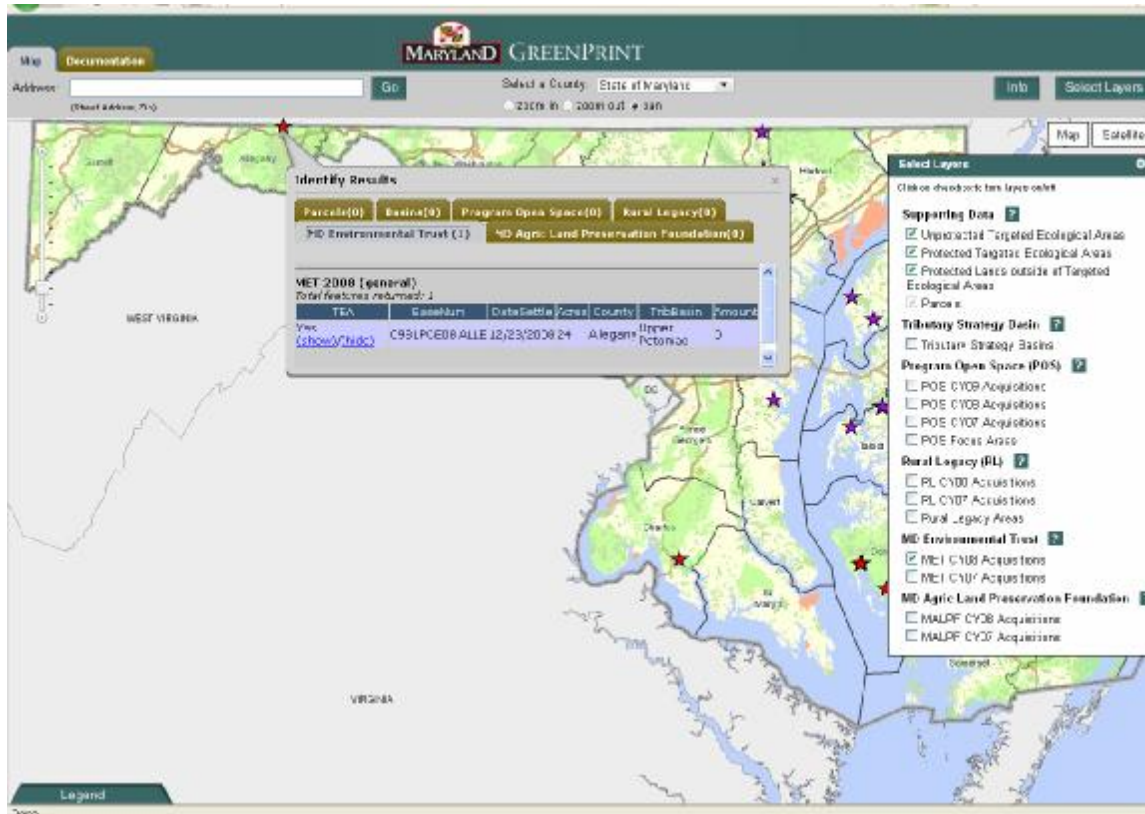
The Rural Legacy Program was created in 1997 to protect large, contiguous tracts of Maryland's most precious cultural and natural resource lands through grants made to local applicants. In a grass root approach, local government and land trusts (sponsors) apply to have places that are significant to the community and the state designated as Rural Legacy Areas. Rural Legacy applications are reviewed by the Rural Legacy Advisory Committee, a panel of eleven volunteers appointed by the Governor. Their recommendations are then forwarded to the Rural Legacy Board which is comprised of the Secretaries of the Departments of Natural Resources, Agriculture, and Planning. Their recommendations are, in turn, reviewed and approved by the Maryland Board of Public Works, comprised of the Governor, the Comptroller and the Treasurer.

Identify Results for Rural Legacy Areas

Acres – Amount of acreage within a Rural Legacy Area calculated by Arc Gis
 County – The name of the county or counties in which the Rural Legacy Area is located

Name – Name of the designated Rural Legacy Area

The data table for Maryland Environmental Trust (MET) acquisitions is described below.



MET CYxx Acquisitions – Maryland Environmental Trust acquisitions in calendar year xx, where xx represents a two-digit year

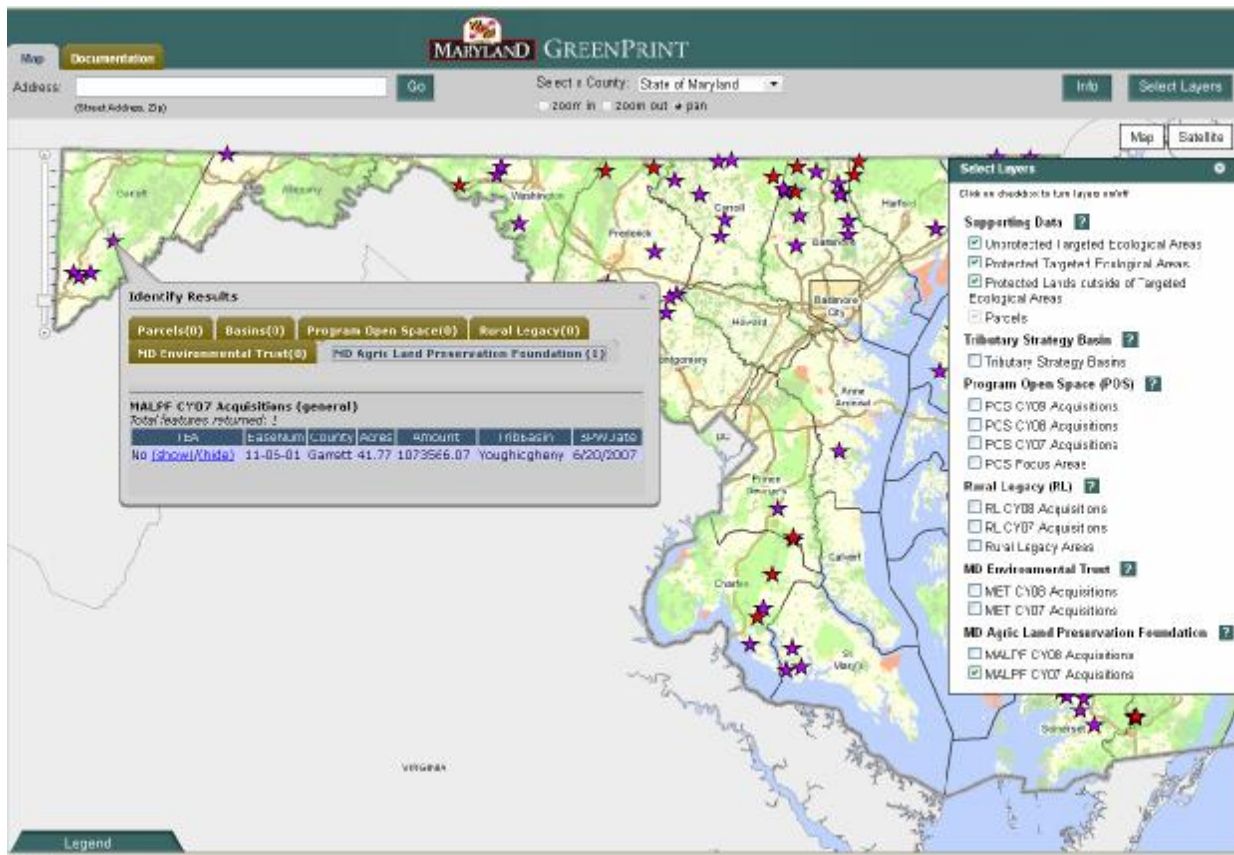
The Maryland Environmental Trust (MET) is a statewide land trust, operated by the Maryland Department of Natural Resources and governed by a citizen Board of Trustees. It was created by the General Assembly in 1967. The goal of this program is the preservation of open land, such as farmland, forest land, and significant natural resources. The primary tool for doing this is through donated conservation easements. Private landowners, who want to preserve their land and have interest in donating an easement, can ensure the land will never be used in a way contrary to their intent, will benefit financially through reduced property taxes and will be able to pass the land on to their children without paying large estate taxes. Because this program operates on donations, it is not targeted, but can play a significant role in protecting land from development

The star symbol, which displays at regional and statewide views, shows the location of a project purchased in a calendar year. A project can consist of one or more parcels. Outlines of actual parcels purchased within a calendar year display at more detailed, neighborhood views. In the case of a project with multiple parcels, the Identify results will indicate the total acreage and BPW amount for the project. Hence, you will see the same acreage, BPW amount and TEA result for each part of the project.

Identify Results for Maryland Environmental Trust easements

- Acres – Number of easement acres donated or purchased
- Amount – Dollar amount for donated and purchased MET easements
funding sources for MET easements are varied and can include one or a combination of the following: Program Open Space, Rural Legacy, County, Federal, and/or Private Conservation groups.
- County – The name of the county in which a MET parcel is located
- DateSettle – Date deed was recorded
- EaseNum – Reference number assigned to a MET project
- TEA – Specifies whether the MET project falls within the Targeted Ecological Area
Yes = In TEA
No = Out of TEA
- TribBasin – Indicates name of Tributary Strategy Basin the MET easement is in

The data table for Maryland Agricultural Land Preservation Foundation is described below.



MALPF CYxx Acquisitions – Maryland Agricultural Land Preservation Foundation acquisitions in calendar year xx, where xx represents two-digit year

The Maryland Agricultural Land Preservation Foundation (MALPF) was established by the Maryland General Assembly in 1977 and is part of the Maryland Department of Agriculture.

The Foundation purchases agricultural preservation easements that forever restrict development on prime farmland and woodland. MALPF settled on its first purchased easement in October 1980.

The star symbol, which displays at regional and statewide views, shows the location of a project purchased in a calendar year. A project can consist of one or more parcels. Outlines of actual parcels purchased within a calendar year display at more detailed, neighborhood views. In the case of a project with multiple parcels, the Identify results will indicate the total acreage and BPW amount for the project. Hence, you will see the same acreage, BPW amount and TEA result for each part of the project.

Identify Results for Maryland Agricultural Land Preservation Foundation

Acres – Approximate number of easement acres purchased

Amount – Amount of State dollars for purchase of easement

BPWDate – Date the MALPF project was approved by the Board of Public Works

County – The Name of the county in which a MALPF easement is located

EaseNum – Easement number of project

TEA – Specifies whether MALPF project falls within the Targeted Ecological Area.

Yes = In TEA

No = Out of TEA

TribBasin – Name of the Tributary Strategy Basin the easement is in

The data table for Parcels is described below

The screenshot shows the Maryland Greenprint web application interface. At the top, there is a navigation bar with the Maryland Greenprint logo and a search bar. Below the search bar, there is a map of Maryland with various colored overlays representing different land preservation programs. A popup window titled 'Identify Results' is open over a specific parcel. The popup contains the following information:

- Parcels (1)
- Acres (0)
- Program Open Spaces (0)
- Rural Legacy (0)
- MD Agricultural Trust (0)
- MD Agric Land Preservation Foundation (1)

A link is provided to learn more about the parcel: [Click here to learn how to receive more information on this parcel.](#)

The parcel ID is 1205016292 (show/hide).

On the right side of the map, there is a 'Selected Layers' panel with the following options:

- Supporting Data
 - Unprotected Targeted Ecological Areas
 - Protected Targeted Ecological Areas
 - Protected Lands outside of Targeted Ecological Areas
 - Parcels
- Tributary Strategy Basin
 - Tributary Strategy Basins
- Program Open Spaces (POS)
 - POE CY08 Acquisitions
 - POE CY07 Acquisitions
 - POE CY06 Acquisitions
 - POE Focus Areas
- Rural Legacy (RL)
 - RL CY08 Acquisitions
 - RL CY07 Acquisitions
 - Rural Legacy Areas
- ME Environmental Trust
 - MEI CY08 Acquisitions
 - MEI CY07 Acquisitions
- MD Agric Land Preservation Foundation
 - MALPF CY08 Acquisitions
 - MALPF CY07 Acquisitions

ACCTID is the account identifier for the parcel. It is a unique number for every parcel in the State. Each point or node displayed represents a link to the Maryland Department of Assessments and Taxation's (SDAT) parcel database - http://sdatcert3.resiusa.org/rp_rewrite/. The Property Account Identifier provided by the system is described below.

Parcel account number, a unique identifier for each account within any county.

Anne Arundel County

Positions 1-2 are the jurisdiction (county) code, positions 3-4 are the tax district, positions 5-7 are the subdivision and the remaining 9 positions are the parcel account number.

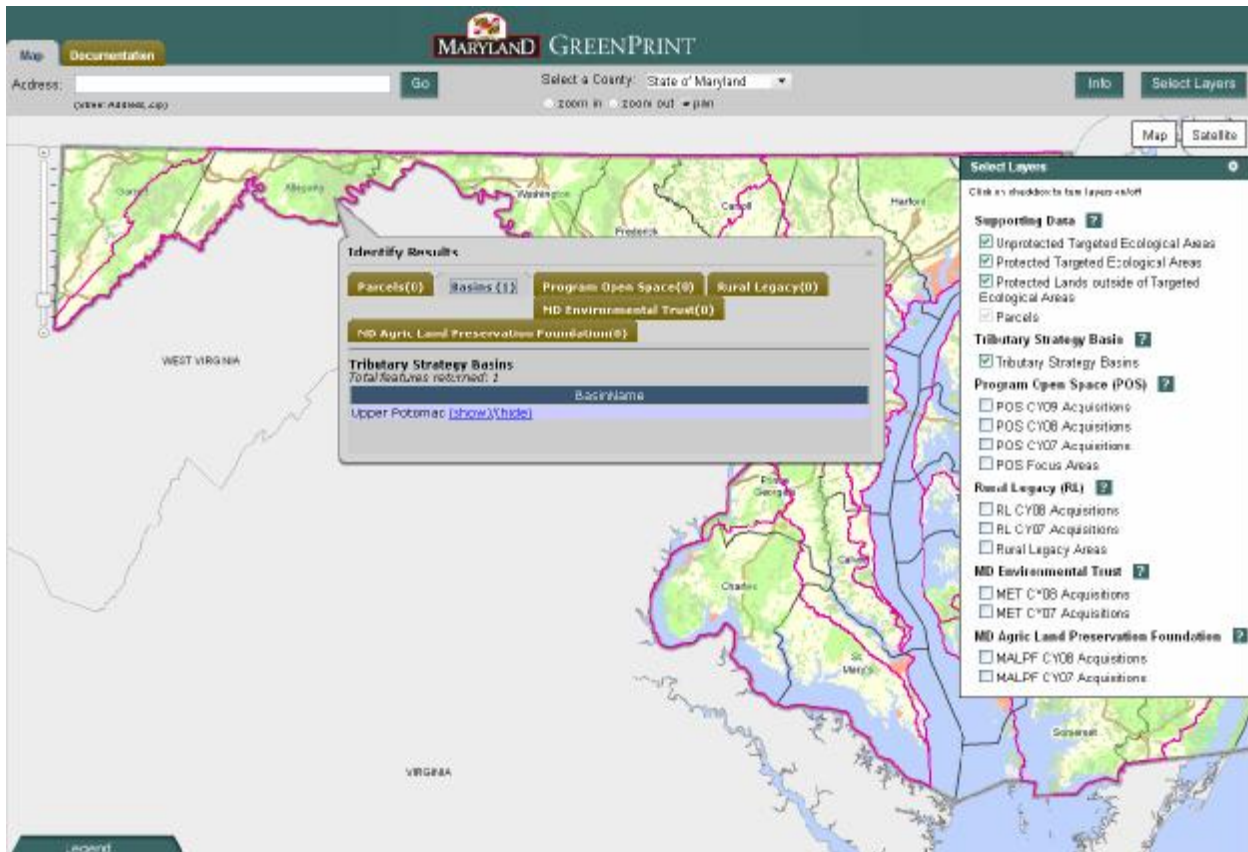
Baltimore City

Positions 1-2 are the jurisdiction (city) code, positions 3-4 are the ward, positions 5-6 are the section, positions 7-11 are the block, positions 13-15 are the lot and position 16 is filler.

All Other Counties

Positions 1-2 are the jurisdiction (county) code, positions 3-4 are the tax/election district and the remaining 12 positions are the parcel account number.

The data table for Tributary Strategy Basins is described below.

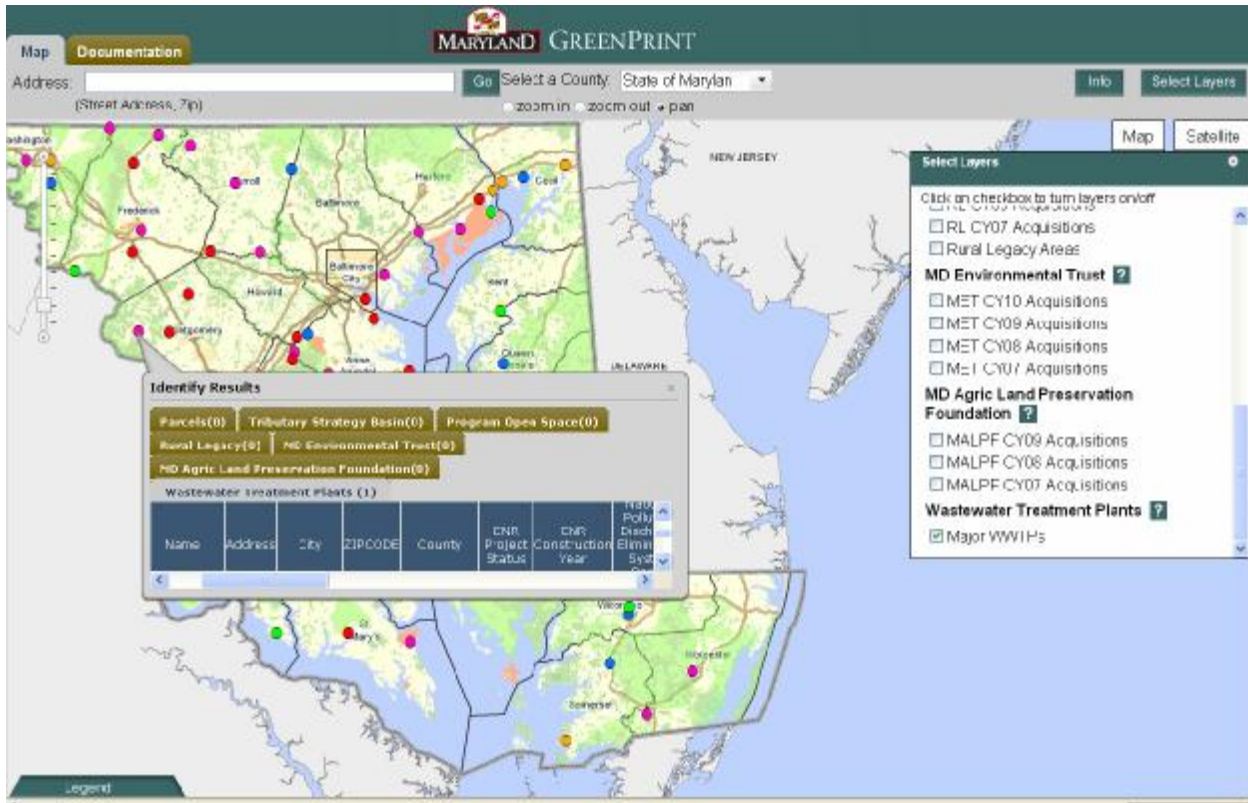


Tributary Strategy Basins

Tributary Strategy Basins - represent the major drainage basins of Maryland's portion of the Chesapeake Bay. Each basin has a Tributary Team comprised of local citizens, farmers, business leaders and government officials appointed by the Governor. They are working to keep local waterways clean and healthy.

Identify Results for Tributary Strategy Basin

BasinName – Indicates name of the Tributary Strategy Basin
 The data table for Wastewater Treatment Plants is described below.



Wastewater Treatment Plants – ENR status

Enhanced Nutrient Removal Program

Recognizing that more needs to be done, the Chesapeake Bay 2000 Agreement requires further reduction in nitrogen and phosphorus entering the Bay by about 20 million pounds and 1 million pounds per year respectively. The Maryland Department of the Environment is using the Bay Restoration Fund to upgrade the 66 major wastewater treatment plants, which discharge to the Chesapeake Bay, with enhanced nutrient removal (ENR) technologies. Once upgraded, these plants are expected to reduce nitrogen and phosphorus in the wastewater down to 3 mg/l total nitrogen and 0.3 mg/l total phosphorus, achieving approximately one-third of the needed reduction under the Chesapeake Bay 2000 Agreement. Other pollutants will continue to be reduced by more than 90%.

Identify Results for Wastewater Treatment plants

Name – Name of WWTP

Address – street where WWTP facility is located

City – City where WWTP facility is located

Zip Code – zip code of WWTP location
County – The Name of the county in which a WWTP is located
ENR Project Status – ENR status of WWTP
ENR Construction Year – Year ENR construction started
National Pollutant Discharge Elimination System Permit Number – Permit Number
Basin – Tributary Basin
Sub-Basin – 8-digit water sub basin
Receiving Waterbody - Receiving stream/Body of water
Fact Sheet Web Link- Link to information page for the WWTP
East – MD State Plane Coordinates 1983 meters – Maryland State Plane East geographic coordinate 83 meters
North - MD State Plane Coordinates 1983 meters – Maryland State Plane North geographic coordinate 83 meters
Longitude – degree of longitude of WWTP location
Latitude – degree of latitude of WWTP location
Facility's Design Capacity (mgd) – Facilities current design capacity
ENR Strategy Total Nitrogen Load Cap (lbs/year) – Enhanced Nitrogen Removal Nitrogen Load Cap
ENR Strategy Total Phosphorus Load Cap (lbs/year) – Enhanced Nitrogen Removal Phosphorus Load Cap
2007 Average Flow (mgd) –
2007 Total Nitrogen Load (lbs) –
2007 Total Phosphorus Load (lbs) –